

**Phospho-SPRY4(Y75) Antibody**  
**Affinity Purified Rabbit Polyclonal Antibody (Pab)**  
**Catalog # AP3585a**

**Specification**

---

**Phospho-SPRY4(Y75) Antibody - Product Information**

Application	WB, DB,E
Primary Accession	<a href="#">O9C004</a>
Reactivity	Human
Host	Rabbit
Clonality	Polyclonal
Isotype	Rabbit IgG

**Phospho-SPRY4(Y75) Antibody - Additional Information**

**Gene ID** 81848

**Other Names**

Protein sprouty homolog 4, Spry-4, SPRY4

**Target/Specificity**

This SPRY4 Antibody is generated from rabbits immunized with a KLH conjugated synthetic phosphopeptide corresponding to amino acid residues surrounding Y75 of human SPRY4.

**Dilution**

WB~~1:1000

DB~~1:500

E~~Use at an assay dependent concentration.

**Format**

Purified polyclonal antibody supplied in PBS with 0.09% (W/V) sodium azide. This antibody is purified through a protein A column, followed by peptide affinity purification.

**Storage**

Maintain refrigerated at 2-8°C for up to 2 weeks. For long term storage store at -20°C in small aliquots to prevent freeze-thaw cycles.

**Precautions**

Phospho-SPRY4(Y75) Antibody is for research use only and not for use in diagnostic or therapeutic procedures.

**Phospho-SPRY4(Y75) Antibody - Protein Information**

**Name** SPRY4

**Function** Suppresses the insulin receptor and EGFR-transduced MAPK signaling pathway, but does not inhibit MAPK activation by a constitutively active mutant Ras (PubMed:[12027893](#)). Probably impairs the formation of GTP-Ras (PubMed:[12027893](#)). Inhibits Ras-independent, but not

Ras-dependent, activation of RAF1 (PubMed:[12717443](#)). Represses integrin-mediated cell spreading via inhibition of TESK1-mediated phosphorylation of cofilin (PubMed:[15584898](#)).

#### Cellular Location

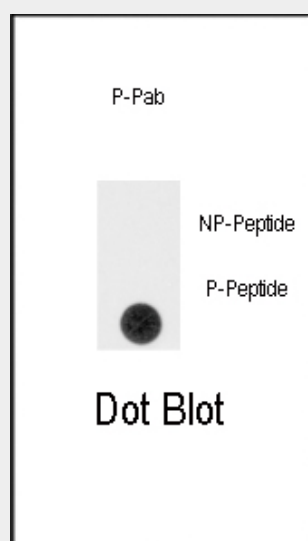
Cytoplasm. Cell projection, ruffle membrane; Peripheral membrane protein; Cytoplasmic side. Note=Found in the cytoplasm in unstimulated cells but is translocated to the membrane ruffles in cells stimulated with EGF (epidermal growth factor) (By similarity). Colocalizes with TESK1 in vesicular spots in the cytoplasm (PubMed:15584898) {ECO:0000250|UniProtKB:Q9WTP2, ECO:0000269|PubMed:15584898}

#### Phospho-SPRY4(Y75) Antibody - Protocols

Provided below are standard protocols that you may find useful for product applications.

- [Western Blot](#)
- [Blocking Peptides](#)
- [Dot Blot](#)
- [Immunohistochemistry](#)
- [Immunofluorescence](#)
- [Immunoprecipitation](#)
- [Flow Cytometry](#)
- [Cell Culture](#)

#### Phospho-SPRY4(Y75) Antibody - Images



Dot blot analysis of anti-Phospho-SPRY4-pY75 Antibody (Cat.#AP3585a) on nitrocellulose membrane. 50ng of Phospho-peptide or Non Phospho-peptide per dot were adsorbed. Antibody working concentrations are 0.5ug per ml.

#### Phospho-SPRY4(Y75) Antibody - Background

SPRY4 is an inhibitor of the receptor-transduced mitogen-activated protein kinase (MAPK) signaling pathway. It is positioned upstream of RAS activation and impairs the formation of active GTP-RAS.

#### Phospho-SPRY4(Y75) Antibody - References

Tsai CF, et al. (2008) J Proteome Res

Guo A, et al. (2008) Proc Natl Acad Sci U S A 105, 692-7

Rikova K, et al. (2007) Cell 131, 1190-203

Wolf-Yadlin A, Hautaniemi S, Lauffenburger DA, White FM (2007) Proc Natl Acad Sci U S A 104, 5860-5

Tsumura Y, et al. (2005) Biochem J 387, 627-37